

Reflections

A magazine for family, friends, and supporters of The Camphill School

SPRING + SUMMER 2025



The
Camphill
School

Reflections

Cover & Below:
Connect with nature and
enjoy the sunshine.

Contents

3 Editor's Letter / 4 Building for a Lifetime Campaign: Our vision. Our future. / 15 Turn your Pennsylvania personal or business tax dollars into tuition assistance! / 16 My Motherhood Journey / 18 2025 Gala / 19 Feast at Foxfield Raffle



2024/2025 Board of Directors Bethany Asplundh, *President* / Tom Rosendale, *Treasurer* / Claus Sproll, *Secretary* / Sonja Adams
Guy Alma / Brent Franklin / Jan Christopher Goeschel, Ph.D. / Bill Hagner / Jacquelyne Hengst, Psy.D. / Howard Herman / Fran Kinniry
Sue Rushing / Andreas Schuschke / Molly Swain

Emeritus Bernard Wolf

Editor Courtney Coffman

Contributor Diane Poce

Editor's Letter



I recently read something that Claus Sproll, our Finance Director, wrote in 2019. He referred to a group of people's attributes and strengths as different flowers and what a beautiful bouquet they would make.

As spring approaches, this reference made me think of our Children's Village at Beaver Run as a meadow. In a meadow, each sprout makes its presence known at a time it finds suitable. Each stalk has leaves different from the other plants. Each bud unfurls itself, petal by petal, displaying its full beauty for all to enjoy. There are a variety of shapes, sizes, and colors. They each bring something special to the meadow and its flora and fauna inhabitants—beauty, sustenance, shelter. The flowers also produce the seeds from which future meadows will come forth.

The Camphill School recognizes these same attributes in all our community members, but most especially our students. Our founders, of both the wider Camphill Movement and the school, built villages for children to honor the extraordinary time of childhood and adolescence. It is a time of discovering your place in the wider world, learning about those around you and how they can care for you and about you, and finding out who you are and who you want to become. It is a confusing time, but with the right community of people to support you and see you through, it provides the foundation for a successful adult life where you can contribute to community and support future generations in finding their own place.

As The Camphill School continues our Building for a Lifetime Campaign, the projects of which are outlined further in this issue, we strive to provide the best possible start for students as they bloom into the beautiful, capable, and contributing people they are and can be. We are truly grateful and humbled for the support we have received from you, our community. Support that will allow us to fulfill the needs of our students and community—now and in the future.

A handwritten signature of Courtney Coffman.

Building for a Lifetime Campaign:

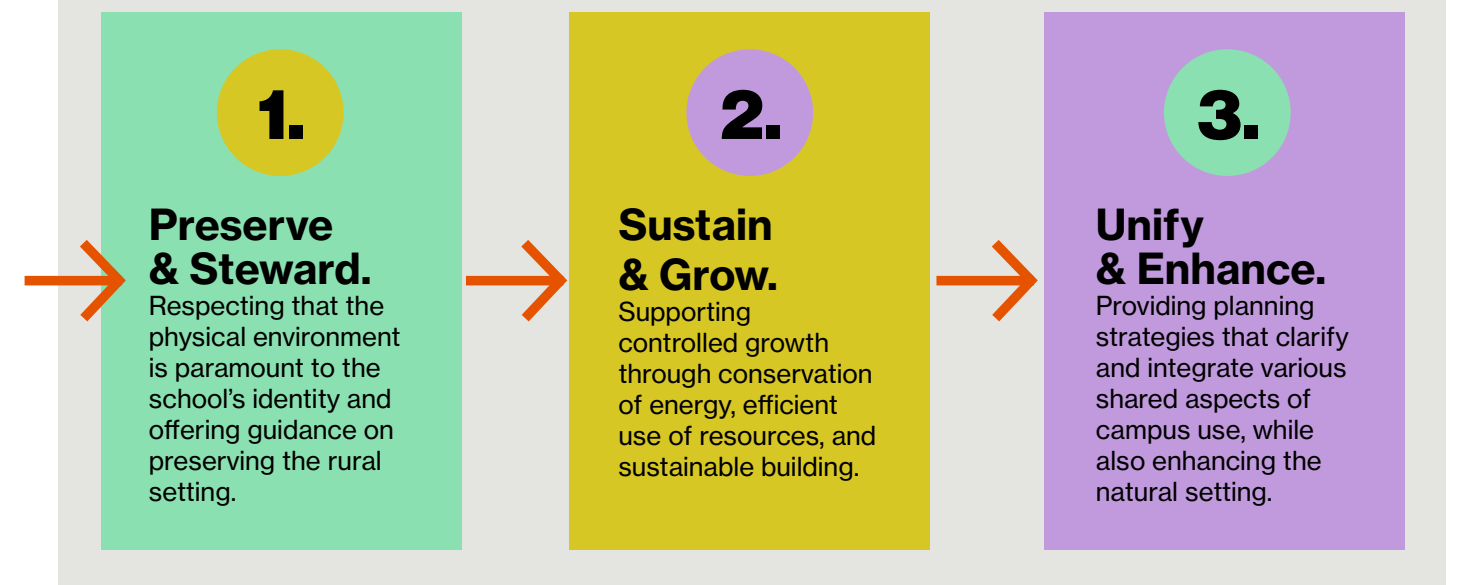
Our vision. Our future.

The Camphill School continues to be defined by the vision, generosity, and actions of its dedicated community. Throughout our more than six decades, you, our friends and supporters, have risen to every challenge—and at this extraordinary moment, we ask you to

once again come together, as partners, in supporting the future of our school and students. Your participation in this Campaign will help write the next chapter in The Camphill School.

A true renewal of The Camphill School buildings and grounds is necessary to

strengthen the village atmosphere, to improve accessibility, and to provide all students and community members with buildings and residences that are beautiful, functional, and inspiring. In 2016, the school began a Campus Master Plan process, focusing on three primary objectives:



“In order to continue providing quality education and attracting both house parents and teachers, the school needs to modernize spaces. It’s time to make The Camphill School an even better place for both the students and the faculty.”

Craft House

Thanks to contributions committed during the silent phase of our Building for a Lifetime Campaign, our Craft House renovation was completed in fall 2023. This has improved accessibility, functionality, and safety by providing:

- A larger woodshop.
- A weavery with increased classroom and storage spaces.
- A dedicated entry for the in-house food store.
- A pottery studio with a stand-alone kiln room.
- Courtyard access for outdoor clay work.
- Space to support seamless transition of classes.
- ADA accessibility and additional and upgraded restroom facilities.
- A patio for both community gathering and artwork display.



Woodledge & Ember

The evolution of students' and resident staff members' needs over the five decades since Woodledge and Ember were built necessitates the renovation and expansion of the homes. These thoughtful improvements will transform the quality of living for students and the residential community by:

➔ Providing more personal space and larger common areas, including a mix of double and single rooms for students

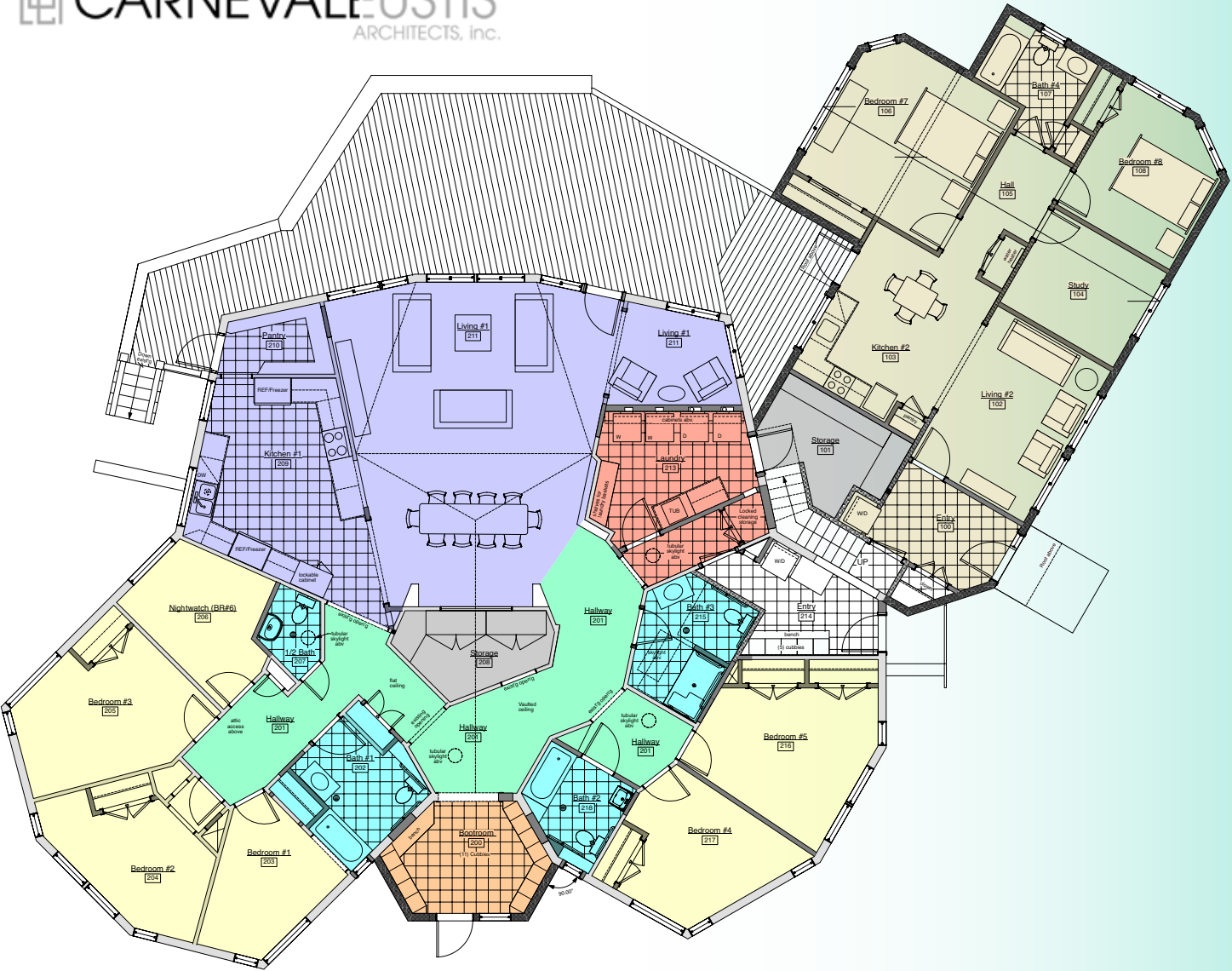
➔ Creating two dedicated apartments that support a healthier work-life balance for resident volunteer co-workers while maintaining the intergenerational living that is at the core of the school's mission

➔ Improving basic facilities such as bathrooms; expanding entranceways, laundry, and storage facilities; and creating improved ADA accessibility

➔ Raising the sunken floors to enable the reconfiguration of the main living and kitchen spaces, allowing for better flow and functionality



CARNEVALE EUSTIS ARCHITECTS, inc.



- New Family Living Unit
- House Bedrooms
- Shared Laundry
- House Living Space
- House Bathroom
- House Hallway
- New House Bootroom
- House Storage

A Renovation & Addition for:
The Camphill School - Ember
 1784 Fairview Road, East Nantmeal Township, PA 19343
 NEW SCHEMATIC DESIGN
 Sheet 1 of 2
 January 13, 2025

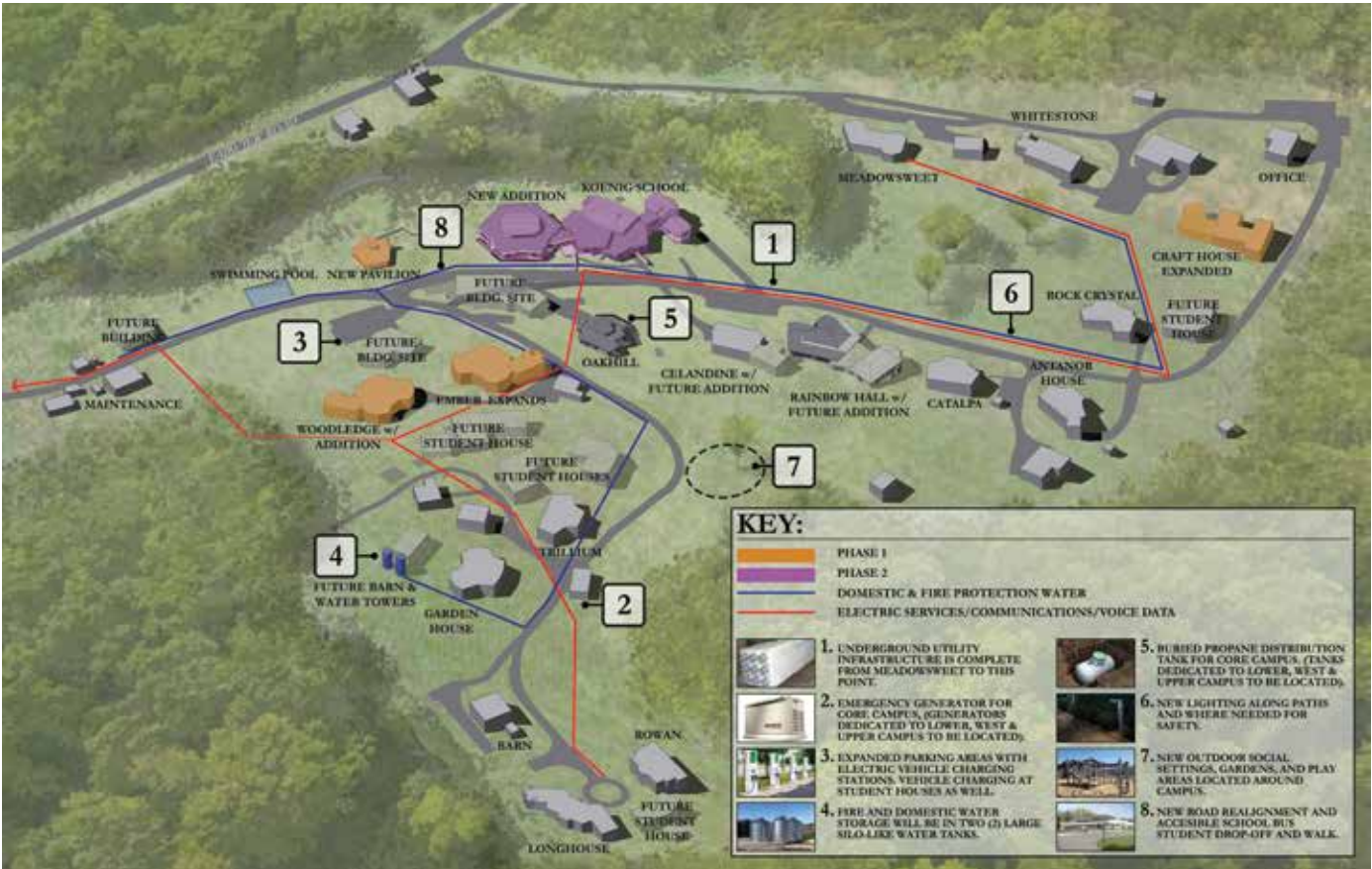
Ember First Floor
 scale: 1/4" = 1'-0" 1,365 gross S.F. (addition)
 Total 1st Floor = 4,281 S.F.
 Ducted, high-efficiency heat & air conditioning

Infrastructure

As we begin to renovate and expand our student residences and school buildings, we will also be upgrading our infrastructure to support these and future capital projects. The first step is the installation of two large water storage silos at the top of the campus. These will serve all future fire protection needs, including those in the renovated Woodledge and Ember. Underground conduits will also be installed at the top of the campus for a future campus-wide electrical upgrade.

The map on the bottom right of the next page shows the future build-out of critical infrastructure improvements. Once finished, the most significant area of infrastructure renewal becomes largely invisible with the development of a utility “backbone” that will provide underground pathways for essential utility services. Vital for the health and safety of our school community is the reliability of:

- ➔ Electric power
- ➔ Communications and data
- ➔ Life safety alarms and signaling systems
- ➔ Access to domestic and fire protection water systems
- ➔ A pathway for the utility “backbone”



The Future Starts With You

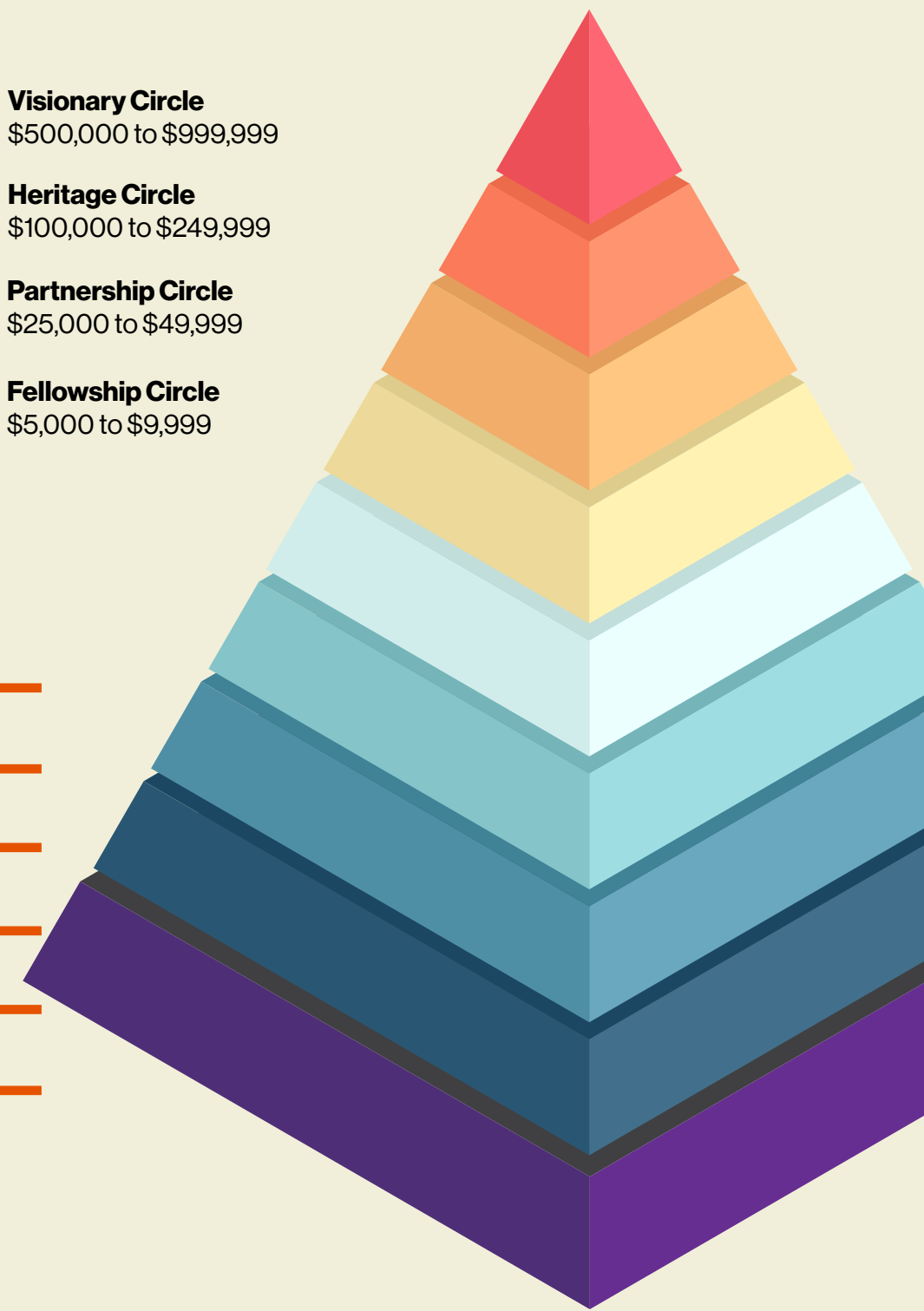
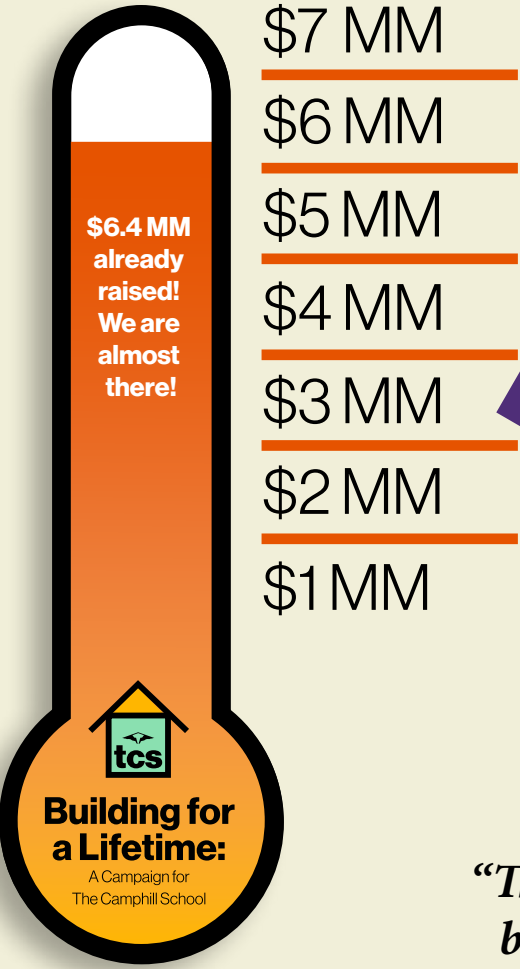
Throughout our history, The Camphill School has been defined by the vision, generosity, and action of its dedicated community members. This is an extraordinary moment in time. As the school approaches the goal of this historic \$7 million comprehensive Campaign to renew and revitalize its campus, offer tuition assistance to students, and provide general operating support, now is the moment for bold action to ensure this vision for the future of The Camphill School becomes a reality. Your generosity of spirit and your participation in this Campaign will enable The Camphill School to profoundly transform its campus and positively impact students and community members for generations to come!

Gifts Needed: Our \$7MM Goal

LEVEL	NUMBER OF GIFTS	TOTAL
\$1,000,000	1	\$1,000,000
\$500,000	4	\$2,000,000
\$250,000	6	\$1,500,000
\$100,000	7	\$700,000
\$50,000	13	\$650,000
\$25,000	17	\$425,000
\$10,000	30	\$300,000
\$5,000	40	\$200,000
Below \$5,000	100+	\$225,000
		Total: \$7,000,000

Giving Levels

- Keystone Circle**
\$1,000,000 and Greater
- Visionary Circle**
\$500,000 to \$999,999
- Founder's Circle**
\$250,000 to \$499,999
- Heritage Circle**
\$100,000 to \$249,999
- Cornerstone Circle**
\$50,000 to \$99,999
- Partnership Circle**
\$25,000 to \$49,999
- Community Circle**
\$10,000 to \$24,999
- Fellowship Circle**
\$5,000 to \$9,999
- Friendship Circle**
\$4,999 and Below



“The school takes care of not only the students, but also their families. They saved our lives.”

Naming Opportunities

\$1,000,000

Dedication of:

- Entire Infrastructure

\$500,000

Dedication of:

- Woodledge
- Ember
- School Store

\$250,000

Naming of:

- Woodledge Great Room
- Ember Great Room
- Woodledge Resident Staff Apartment
- Ember Resident Staff Apartment
- School Retail Store
- School Store Workspace

\$100,000

Naming of:

- Woodledge Kitchen
- Ember Kitchen
- Woodledge Study
- Ember Study
- Woodledge Deck
- Ember Deck
- Pottery Studio
- Weavery Studio
- Water Storage Tank (2)
- Neighborhood Car-charging Station

\$50,000

Naming of:

- Bedrooms (24)



Turn your Pennsylvania personal or business tax dollars into tuition assistance!



Thank you to these businesses and individuals who have participated over the last year:

Anonymous
Craig and April Adams
Scott and Jen Althouse



Fran Kinniry
Liz and George F. Ohsiek, Jr.



The Pennsylvania Education Improvement Tax Credit (EITC) program enables you to redirect your Pennsylvania tax dollars – almost dollar for dollar – to The Camphill School, for tuition assistance for our students from Pennsylvania.

To qualify for the program, businesses must pay one of the taxes listed below. Individuals qualify if their Pennsylvania state taxes exceed \$3,500 annually. Effectively, you or your business can donate to The Camphill School instead of paying taxes to the Commonwealth of Pennsylvania. Eligible businesses and individuals can receive a tax credit equal to 75% of their contribution to The Camphill School. This credit increases to 90% if you or your business commits to give the same amount for two consecutive years.

Any business authorized to do business in Pennsylvania subject to one or more of the following taxes may be eligible:

- Personal Income Tax
- Capital Stock/Foreign Franchise Tax
- Corporate Net Income Tax

- Bank Shares Tax
- Title Insurance & Trust Company Shares Tax Insurance Premium Tax (excluding surplus lines, unauthorized, domestic/foreign marine)
- Mutual Thrift Tax
- Malt Beverage Tax
- Retaliatory Fees under section 212 of the Insurance Company Law of 1921

For businesses, application deadlines apply.

If you want to support the school and make a gift directly to the school, you will get a tax deduction, yes, but the majority of that donation is still a cost to you. If you make a gift to the school through this EITC program, it can offset almost your entire PA tax bill – in other words, the donation comes at almost no additional cost to you. You are basically redirecting who gets the money when you pay your state tax bill, which you have to pay anyway.

To learn more, contact Courtney Coffman (ccoffman@camphillschool.org) or visit camphillschool.org/ways-to-give.

My Motherhood Journey

By Diane Poce, Sarah's mom

“You will be a Mom!” I remember those words so clearly. “You will be a wife and a mother! It’s on your heart, and one day it will happen.” They were spoken by a dear friend when I was in my late twenties, lamenting that I had yet to meet Mr. Right and start the family I always dreamed of.

That friend, Maryanne, had recently married and was newly pregnant with her first baby. She was someone I deeply respected and admired—kind, loving, and profoundly spiritual.

Her words would come true, but not in the way I had ever imagined.

I did marry Mr. Right and became a mother, and I will always believe that Maryanne had a hand in it. Fifteen years after our conversation, I was by Maryanne’s side during the final days of her battle with terminal breast cancer. She left behind her devoted husband and their 13-year-old daughter, Sarah.

In the months following Maryanne’s passing, I found myself offering support to her husband, Rick, who was now navigating life as a single father. Raising a teenager is no easy task, but Sarah’s challenges were even greater—she had been diagnosed with profound Autism and later, Rett syndrome.

Over time, Rick and I grew closer, and eventually, we got married. And just like that, I found myself, as Maryanne had predicted, in the role of “bonus mom.”

Like any mother, my introduction to parenthood was difficult. But the challenges of raising a child with special needs were beyond anything I had expected. I was overwhelmed by the demands of personal care, school reports, IEP meetings, medical appointments, insurance authorizations, and, of course, the sleepless nights. Sarah was still grieving the loss of her mother, and she struggled with daily bouts of aggression and self-injury. Every

day we received a long list of negative behaviors from school.

I felt hopeless and alone.

I doubted myself, wondering why I had ever believed I could be a mother—let alone a special needs parent. I remember praying at Maryanne’s grave, asking for guidance on how to be the stepmother that Sarah needed. I hoped for signs that I was looking in the right direction, asking the needed questions and making the right decisions. My own mother had always told me that red cardinals were signs from loved ones who had passed.



As I struggled to hold on to hope, I started seeing red cardinals regularly. I took it as a sign that Maryanne was listening.

She led me to two incredible women—Camphill mothers Lainey Mosely (Leta, Class of 2015) and Lori Leathers (Gabe, Class of 2021). They spoke of the peace and happiness their children had found at The Camphill School. Rick and I toured the school and were amazed by the joy that emanated from both students and staff. We, for the first time ever, opened our minds to the idea of a residential program.

At first, I felt like I had failed in my motherhood journey. But that feeling began to fade when I met Sarah’s first housemother, Anna Harris. For those who have never had the pleasure of meeting Anna, she is Mary Poppins incarnate—an earth angel who moved effortlessly through Long House with a baby on one hip and a toddler tugging at her apron strings.

The day we dropped Sarah off, Anna showed us to her new room. Hanging above her bed was a beautiful painting of a bright red cardinal. I took it as a sign of good things to come.

Leaving Sarah that day left a hole in my heart, but within hours, I received a call from Lucia Sun (Jaime, Class of 2023), a seasoned Camphill mom. The Camphill mothers quickly embraced me, offering the kind of support only they could understand. Amy McHugh (Ellie, Class of 2022) and Lucia helped me learn to “get out of Sarah’s way” and allow her to build confidence and independence.

Then, little miracles began to happen.

Sarah’s agitation faded. Her dependence on behavioral medications decreased, and slowly her smiles began to return.

We will be forever grateful to Rachel



Knauf, Sarah’s second housemother, who accomplished the impossible—teaching Sarah to sit at the dinner table and sleep through the night. We were blessed with MJ, her first housemother at Beaver Farm, who introduced her to the opera at the Academy of Music and encouraged us to bring her into the community more often. Then came Mereet, who welcomed Sarah into Lucas House just months after having her own baby, Kai.

In our second year at the farm, we met the Sarah Whisperer herself—Ani Alma. She taught me to understand Sarah’s unspoken language. And now, at Foxfield, we have Robin. I don’t think I’ve ever met someone who radiates love quite like Robin. She has shown us the importance of rhythm and ritual, even when Sarah is home with us.

There are so many more mothers in the Camphill community who have touched our lives.

As Sarah enters her final year at Camphill, I reflect on all she has endured—and how far she has come in these six years. No one can ever replace Maryanne. But Maryanne knew exactly where to lead us so that Sarah would continue to be loved and supported.

And she led me to the right women to walk beside me in this motherhood journey.

To all the beautiful women of Camphill—birth moms, bonus moms, and caregivers—**Happy Mother’s Day!**



**Building for
a Lifetime**

Please Join Us!

Friday, May 30, 2025

Building for a Lifetime Gala

Friday, May 30, 2025

6 o'clock

The Desmond Hotel

Malvern, Pennsylvania

Join us to be part of achieving
the school's campaign goal!
Visit **onecau.se/camphill2025**
for information.



FEAST AT FOXFIELD!

Treat family and friends to a one-of-a-kind dining experience!

Enjoy a five-course feast in the recently renovated barn/event space at scenic Foxfield Farm for 15-20 guests, including yourself. Our resident chef, Reydan, will prepare an authentic farm-to-

table meal with ingredients from Beaver Farm. You may request a traditional, vegetarian, or vegan menu. The dinner will take place on a mutually agreed upon date during summer 2025.*

Winning ticket will be drawn at the Gala on Friday, May 30, 2025.

**This is a BYOB event.*



**Raffle Tickets
are \$50 Each or
Three for \$100!**

Winning ticket will be drawn on Friday, May 30, 2025. You need not be present to win.

Name Phone Email

Address City, State, Zip

☐ One (1) Ticket (\$50) ☐ Three (3) Tickets (\$100) ☐ _____ Tickets

☐ I have enclosed a check made payable to The Camphill School in the amount of \$

Please charge \$ to my ☐ Visa ☐ MasterCard ☐ Discover ☐ American Express

Card No. Exp. Date CVV

Mail: The Camphill School, 1784 Fairview Road, Glenmoore, PA 19343
Phone: 610.469.9236x132 **Online:** bit.ly/camphill2025

Thank You for Your Support!



INDICIA



FSC LOGO HERE

PLEASE JOIN US

May 10

Farm Fest and Pop-up Framer's Market at Beaver Farm 10 am to 2 pm

May 30

Building for a Lifetime Camphill Gala (see page 18)

VISIT CAMPHILLSCHOOL.ORG FOR MORE DETAILS ABOUT ALL EVENTS.

Waldorf® is a registered service mark of the Association of Waldorf Schools of North America (AWSNA) and used by agreement of membership in AWSNA.

The Camphill School's mission is to create wholeness for children and youth with developmental disabilities through education, extended family living, and therapy so that they may be better understood, they may more fully unfold their potential, and they may meaningfully participate in life.

The Camphill School does not discriminate on the basis of race, age, color, creed, gender, sexual orientation, national or ethnic origin, religion, or disability.



HELP THE CAMPHILL SCHOOL CONSERVE RESOURCES.

Choose to receive future issues of *Reflections* via email. Send your digital subscription request to reflections@camphillschool.org.

Join the growing ranks of the Pietzner Legacy Society by naming our supporting foundation, Beaver Run Foundation, in your will or other estate plans. Call Courtney Coffman at 610.469.9236 x132 for more information.



CALLING SOCIAL ARTISTS

STUDY ANTHROPOSOPHIC INCLUSIVE SOCIAL DEVELOPMENT WITH CAMPHILL ACADEMY



COMMUNITY-BASED HIGHER EDUCATION

Camphill Academy students are full-time, residential members of one of 9 participating Camphill communities in the USA.

3 PROGRAMS & CONCENTRATIONS

1-year, 3-year, and 5-year program options in Curative Education, Social Therapy, and Social Agriculture & Biodynamics.

TUITION-FREE, TRANSFERABLE COLLEGE CREDIT

As a Camphill Academy student, you pay no tuition to begin earning college credit to transfer to a bachelor's degree program at one of our partner universities.

APPLY TODAY!
CAMPHILL.EDU